

# Warren Mott Band Camp Handbook

## GUIDE FOR PARENTS AND Marauder Music Machine Members

### WARREN MOTT HIGH SCHOOL MARAUDER MUSIC MACHINE

2011-2012 Edition



Becky Hercula, President  
Warren Mott Band Club  
586.574.3047, [bmomrn@wowway.com](mailto:bmomrn@wowway.com)

**Pease read this handbook, and sign the last page. Then return the signature page with your registration forms at the On-Site Registration evenings.**

## What will I get out of joining the band? Why should I join?

The words of Plato are still true today: *“I would teach children music, physics and philosophy; but most importantly music. For in the patterns of music and all the arts are the keys to learning.”*

Band is fun. There are many performances, concerts, football games, and trips...but the most important element is what the student gains through an understanding of music. Without the arts, education is not education but vocational training. Practicing one's profession successfully calls for skills in dealing with people, for being able to comprehend the connection between cause and effect, and for the ability to carry the burdens placed on the individual in a free society. Music education helps to prepare the human mind for such needs.

Did you know that in formal studies, students who take music education in secondary schools:

- ♪ raise their SAT scores, on the national average, 61 points for verbal and 46 points for math
- ♪ show a 46% boost in their spatial reasoning IQ
- ♪ increase their cognitive and basic skills development
- ♪ increase their interest in academic learning
- ♪ have higher grade point averages
- ♪ increase their development of academic achievement skills
- ♪ develop faster mentally, emotionally and socially
- ♪ improve their listening skills
- ♪ have improved hand-eye coordination
- ♪ have reduced discipline problems
- ♪ are taught responsibility, reliability, promptness, loyalty and a good work ethic

The National College Board identifies the arts as one of the six basic academic subject areas students should study in order to succeed in college. Physician and biologist Lewis Thomas studied the undergraduate majors of medical school applicants. He found that 66% of music majors who applied to medical school were admitted, the highest percentage of any group.

Taking band classes in high school is a good sound investment of a student's time and effort. This is why there are literally millions of students nation-wide that are involved in high school music programs. We want the Warren Mott Marauder Music Machine to be a worthy organization for our students.

## **Band is a commitment.**

Joining band is different than just joining a club. Students and parents must understand that marching band is a commitment. **After school rehearsals and all performances of the band are mandatory.** The band really counts on each of its members to be present at rehearsals and performances. When individuals are absent the band as a whole suffers.

### **Students who join band must be able to commit to:**

- ♪ attending all of Band Camp
- ♪ attending all rehearsals
- ♪ attending all performances
- ♪ paying all fees on time
- ♪ following all band and school rules
- ♪ being on time for practices
- ♪ being on time for all performances
- ♪ being conscientious about learning and practicing music/routines/drills
- ♪ having a good attitude
- ♪ wearing the uniform properly and treating it with respect
- ♪ treat all band members with respect
- ♪ doing everything you can to make our band the best

The **Warren Mott Music Machine** is made up of several bands.

Marching Band	ALL members of ALL bands are required to be in this band
Varsity Band	Volunteer Band that does the Field Show. Open to all
Cadet Band	All high school instrumentalists, especially 9 <sup>th</sup> graders
Concert Band	For high school instrumentalists who have developed intermediate skill level. Entry by audition
Symphonic Band	For students with advanced instrumental skills. Entry by audition
Wind Ensemble	For students who have the most advanced skills. Entry by audition
Marauder Big Band	Must get director's approval to join this band
Jazz II	After school jazz band – runs late October – June

For further description please refer to the [Marauder Music Machine Handbook](#) that is distributed by the Director each fall or available on the website at [warrenmottbandclub.com](http://warrenmottbandclub.com).

### **Band Camp Mission Statement**

At Marauder Band Camp, it is our mission.....

- ♪ to foster and promote musical growth as well as social growth:
- ♪ to create and maintain a positive, structured, disciplined environment which promotes learning, growth and artistic development;
- ♪ to ensure that our students are safe and secure;
- ♪ to try to instill fun in our camp experience for the students as well as the adults that participate.

## What is the difference between Varsity Band and Marching Band?

At Warren Mott, ALL students in the band program are required to be in the **Marching Band**. This band marches into the stadium at every home football game, plays pregame music and plays during the football game. This band also marches at events such as the GM Tech Center Juvenile Diabetes March, Thanksgiving Day Parade, area concerts at middle schools and any other event the Director may choose.

The **Varsity Band** is open to any Warren Mott Band Student that chooses to work hard, attend all practices and be involved in a great team. The Varsity Band is the Band that does the Field Show at half time during the football games. This band learns the "Show" at Varsity Camp and then will have regular practices after school when school starts. There are also several competitions and Band-O-Ramas that are attended. **Participation in Varsity Band may be subject to the WCS activity fee requirements, paid separately to Warren Consolidated Schools.**

## So what IS Band Camp?

Band Camp is 2 separate weeks of making music and having fun in the process! Our students grow as musicians, make new friends and discover that there are a lot of other people their age who are just as serious about music as they are!!

The first week is mandatory for ALL Marauder band students. This week will also be attended by parents who will be fixing instruments, fitting uniforms, serving snacks and many other miscellaneous jobs.

The second week is for Varsity Band Members only and is held at Central Michigan University. Also attending this week will be section instructors, hired by Mr. Miller, and parent chaperones.

## Where is Band Camp held?

The first week of camp is held at Warren Mott High School. Check in the first day in the lobby of the Band Room. Daily times are 9am-4pm. Students do go home every day.

The second week of camp is held at Central Michigan University. We travel in busses and stay in the dorms. Students are away from home for this week.

## What do students need to bring to the First Week of Camp?

- ♪ A Great Attitude
- ♪ Their Instrument
- ♪ The music they received from us in the spring (this music should be practiced over the summer!)
- ♪ **A lyre, flip folder and about 15 pages – these can be purchased at the local music stores.** The lyre holds the flip folder to the instrument while marching.
- ♪ Good supportive shoes – NO SANDALS or FLIP FLOPS
- ♪ Dressed in summer, school appropriate clothing

## What is provided during the First Week of Camp?

- ♪ Marching instruction
- ♪ School instruments if needed
- ♪ Music instruction
- ♪ Team work
- ♪ Lunch and snacks – **students are not allowed to leave campus.**
- ♪ Water
- ♪ Fun

## A Typical Day at Camp – First Week

9:00am - 10:00am	Marching and Maneuvering
10:00am – 11:00am	Sectionals
11:00am - 12:00pm	Full rehearsal
12:00pm - 12:45pm	Lunch
12:45pm - 1:15pm	Full music rehearsal
1:15pm - 2:00pm	Team Talks
2:00pm – 2:15pm	Break
2:15pm – 3:00pm	Sectionals
3:00pm – 4:00pm	Full Band Rehearsal

During this entire time students are being fitted for marching uniforms, Marching uniforms are usually ready for pick up the last day of the first week of camp, at Mott. Students who order new tuxedo shirts will receive them in October/November when students are fitted for concert uniforms.

This is a sample schedule. Every year the schedule changes.

## What do students need to bring to the Second Week of Camp?

### ONE SUITCASE, ONE FAN – NO OTHER LUGGAGE!

- ♪ Clothing School appropriate, don't forget a sweatshirt/hoodie, remember it's Michigan and the weather can change. T-shirts are handy to have if you get sunburned. Your Band Camp 2007 t-shirt, which you'll receive during the first week of camp. We'll wear these **Friday** (or when announced) as a celebration of a successful camp and show!
- ♪ Gym Shoes **NO SANDALS OR FLIP FLOPS ARE ALLOWED ON THE FIELD.** You will be on your feet about 7 hours a day. Make sure your shoes are supportive and fit well. Do not wear brand new shoes to camp – blisters may occur. Socks should be worn too. Water shoes if you prefer to wear them in the shower.
- ♪ Toiletries Anything you need personally
- ♪ Fan **One** fan per person, one extension cord, **One** alarm clock a small cooler is also acceptable. A good thing to do is share a cooler between 2 roommates.

- ♪ Sunscreen Is a necessity. Sunglasses, chapstick, hat, visor, bug deterrent
- ♪ Instrument Instrument, lyre, flip folder music, reeds, valve oil, cork grease, pen/pencil
- ♪ Money Enough for lunch on the way to camp. There is an ice cream store and a 7/11 near the dorms – so any amount that seems appropriate.
- ♪ Snacks Snacks can be brought to camp. They just need to fit in that one suitcase!

### **What is provided at Varsity Camp at CMU?**

- ♪ Housing Dorm rooms – 4 students to a room and a bathroom. Adult chaperones scattered in rooms throughout the floor. Male students in one dorm building; female students in another. Opposite sexes not allowed in the other’s building.
- ♪ Bedding 2 sheets, 1 pillowcase, 1 pillow, 1 blanket, 2 towels, 1 washcloth, soap & a plastic cup. Students can exchange linen at the desk at the dorm. For example – turn in 1 dirty towel, get 1 clean towel.
- ♪ Food Breakfast, lunch and dinner in the cafeteria. All types of food are offered. Cereal, eggs, toast, sandwiches, hot foods, salad and fruit bar at all meals. Water, juice, coffee, pop.
- ♪ Instruction All instruction is done by Warren Mott Directors, Section Instructors, Drum Majors, and Section Leaders.
- ♪ Rain Gear We provide raincoats if needed.
- ♪ First Aid We provide general first aid. Sunburns, bug bites, sprains, upset stomachs, etc. There is also a hospital nearby in case of any emergency.

### **A Typical Day at Camp – Varsity Week**

7:00am – 7:45am	On field for stretching, basics and field commands
8:00am – 9:00am	Breakfast
9:00am – 11:45am	On field for work on show – water breaks throughout
12:00pm – 1:00pm	Lunch
1:00pm – 3:00pm	On field for work on show – water breaks throughout
3:00pm – 4:45pm	Break
5:00pm – 5:45pm	Dinner
5:45pm – 9:00pm	On field for work on show – water breaks throughout
9:00pm – 10:00pm	Free Time
10:00pm	In Dorms
10:30pm	In Rooms
11:00pm	Lights Out

This is a sample schedule. Every year the schedule changes slightly.

## **What are the rules of Varsity Band Camp?**

All students are expected to abide by the Warren Mott High School rules and the Warren Consolidated Schools Student Code of Conduct. Respect toward chaperones from students and toward students from chaperones is expected.

- ♪ General rules of courtesy will be observed at all times
- ♪ At NO time will there be any girls in boy's rooms or vice versa
- ♪ All students will be on time for all rehearsals and meals.
- ♪ All students will come to each rehearsal prepared with proper equipment.
- ♪ Smoking is not permitted.
- ♪ Alcohol is not permitted.
- ♪ Curfews will be enforced.
- ♪ Room checks will be made nightly. Students will remain in rooms after check until morning report time. Exceptions – to speak with a chaperone or for emergency.
- ♪ Doors should be kept locked at all times.
- ♪ Students are required to wear the CMU ID Badge at all times. Badge is received at check in.
- ♪ Destruction or theft of any property will not be tolerated.
- ♪ Instruments are only to be played on the field.
- ♪ No student vehicles are permitted
- ♪ Students are not allowed to leave campus – except with an authorized adult

### **In the cafeteria....**

- ♪ Take off your hats.
- ♪ Be polite in line.
- ♪ Shirts and Shoes must be worn
- ♪ Clean up your table-leave no trash
- ♪ Act like the respectable young people we know you are

## **What are the times for drop off and pick up for Varsity Band Students?**

Please watch for information that will be sent home the first week of camp for departure time.

On Friday the busses should arrive at Warren Mott at approximately 6:00pm. Prompt pick up is greatly appreciated.

## **Who will my child room with a Varsity Camp?**

We make every effort to let them room with their friends. We post sign up sheets in the Band Room at the end of the year. For freshmen – we try to get these over to the middle schools. If we don't we give them every opportunity to change their rooms during the first week of camp.

## **Are students assigned to a bus?**

Yes. Usually entire rooms are put on the same bus. The configurations have to be made to fill the bus efficiently. It's only a 3 hour ride, so if students don't get a bus with their best friend, it won't be long until they are together again.

## **Will I be notified if my child is sick or hurt?**

If treatment requires a trip to the emergency room or to a clinic we will certainly call you. If your student is just not feeling well, we will not call. We will do our best to make them comfortable and well again. If we need you – we will call. In this day and time most of our students have cell phones and will be calling home.

If your student doesn't feel well, is home sick, is having issues with another student PLEASE have them come and see one of the chaperones. We cannot help a situation if we have no idea it is happening. There will be several female and male chaperones with us. Talk to us! Please discuss this with your student before departure.

Also – many of our incoming freshmen do not realize what hard work Varsity Band Camp is. Please prepare them for standing on their feet for 7 hours. Carrying their instruments and being in the sun. The field itself has no shade. We do take breaks and care for their health, but we are there to work and learn the entire show. In no way do we want to dissuade you or your student, we just want everyone to know that Varsity Camp is work.

## **What about meals?**

On the way to camp, we will stop for lunch at a mall with a food court. We found this to be the easiest. Students will need money for this stop. After we get to camp all meals are provided. We do not stop on the way home from camp. They will be hungry when you pick them up!

## **Can my student order pizza at night?**

Yes – but it must be at the dorm by 10:30pm and they must pay for the pizza themselves. The front desk has all the phone numbers.

## **My student calls and says “Mom, I hate it here! Come get me.” What do I do?**

We can always count on a few cases of homesickness. This always happens in the first couple of days. What we've observed from past experience is that if we can keep a student at camp just a couple more days, they'll come around, and end up really enjoying themselves.

So – here's what you do:

1. Advise your child to “...*stick it out just one more day, sweetie.*” Then, after you hang up.....
2. Call Becky Hercula, at the emergency number provided, so that we can swing into Operation Save-A-Marauder. She will speak with the Director and we will put a special plan into effect for your child. Hopefully the next phone call you get will be from a HAPPY CAMPER!!!!

Obviously, if your child is still miserable the next day or two we'll work it out and you can come and get him/her. We really want and need all of our students at camp though.

## **Why is it so important my child stay at camp?**

Camp is where we will learn the basic drill for the Field Show. Imagine a straight line with 30 people spaced evenly. After 8 beats half the line moves forward. After another 16 beats the other half splits and makes a V formation. Then the top person moves forward to join the first half. Then in a very designated, purposeful march they all join and make a circle that is moving – but they are all marching backwards. All the time playing the music and keeping the

correct tempo. If one person is missing it throws off everyone else. That is a very simplified reason why when your student signs up for Varsity Band it is imperative they be at all rehearsals; and double imperative that they are at all performances. Plus this is a great time of bonding and team building. We hate for anyone to miss out on all the fun!

### Where's the emergency number?

That will be provided with the information handed out during the first week of camp.

### Tell me about the uniforms.

We have two different uniforms that we utilize throughout the year.

The first is our **MARCHING UNIFORM**. This consists of:

Maroon jacket  
Gold Cape  
Black Marching Slacks  
Black Hat with White Plume



These are provided by the Warren Mott Band Program

White gloves



A pair are included in your Band Camp Fees. They will come with the uniform. If your student loses a glove or needs another pair the cost is \$5.00 per pair.

Black Marching Shoes



Shoes are paid for when you register for Band Camp and fitted at On-Site Registration they will be packed with the marching uniform for pick up.

Black Socks



You provide these and they are to be worn with this uniform at all times.

**SUMMER MARCHING UNIFORM.** This uniform is only worn when directed by Mr. Miller during early fall when the weather is too hot for the full marching uniform.

This consists of:

Maroon Polo Shirt



with logo on left chest, short sleeve the polo is paid for when you register for camp.

Black Marching Slacks

from the Marching Uniform

Black Marching Shoes

from the Marching Uniform

Black Socks

You provide these. Black Socks are worn at all times.

NO Jewelry is allowed while wearing a WMHS Marching uniform!!!!

The second uniform is our **CONCERT UNIFORM.**

Women

- Black concert skirt WMBC provides - skirts worn at waist
  
- White tuxedo shirt  
w/ black bow tie and studs } One tux shirt, one bow tie & four studs are paid for when you register for band camp. These are delivered in October or November when concert uniforms are fitted.
  
- White camisole or t-shirt  
Nude or suntan pantyhose  
Black dress shoes } Tux shirts are translucent and color shows through. You provide these items. No print on t-shirt at all.
  
- Small unobtrusive jewelry may be worn- Directors and WMBC have final say.

Men

- Black tuxedo jacket, slacks  
and suspenders } WMBC provides – slacks worn at waist
  
- White tuxedo shirt  
w/black bow tie and studs } One tux shirt, one bow tie & four studs are paid for when you register for band camp. These are delivered in October or November when concert uniforms are fitted.
  
- White t-shirt  
Black socks  
Black Dress Shoes } Tux shirts are translucent and color shows through. You provide these items. No print on t-shirt at all. Clean marching shoes are acceptable.

Small unobtrusive jewelry may be worn – Directors and WMBC have final say

Each of these uniforms is very expensive. It is expected that you will take care of each uniform with the utmost care. It is dry cleanable only. If it should get wet – make sure it is hung to dry and not immediately put in the garment bag. Be proud of the uniform and make sure it is wrinkle free at performance time. If the uniform is damaged or lost at any time while assigned to you, you are responsible for replacing it.

Cost for replacement parts are as follows:

<u>Marching Uniform</u>	
Plume	\$ 22.00
Hat	\$ 39.00
Cape	\$ 85.00
Slacks	\$125.00
Jacket	\$390.00

<u>Concert Uniform</u>	
Skirt	\$135.00
Slacks	\$135.00
Jacket	\$150.00

Uniforms are fitted during the first week of Band Camp. Please be patient as we only have so many of each size of uniform. If there is truly an issue of size you or your student will need to contact Michelle Worthington 586-758-3633 [Batwoman5869@yahoo.com](mailto:Batwoman5869@yahoo.com) at least 2 days before an event. The earlier the better. There will always be someone in the Uniform Room before an event – but we cannot fix everything 10 minutes before a performance. We will be handling approximately 250 students so just give plenty of time. Also, if you have any damage to a uniform – please report it immediately.

You noticed that for our marching uniforms we stress NO jewelry. Please do not get ears, nose, lips, eyebrows, etc pierced immediately before or during camp or marching season. You will be required to take the jewelry out. NO jewelry means just that.

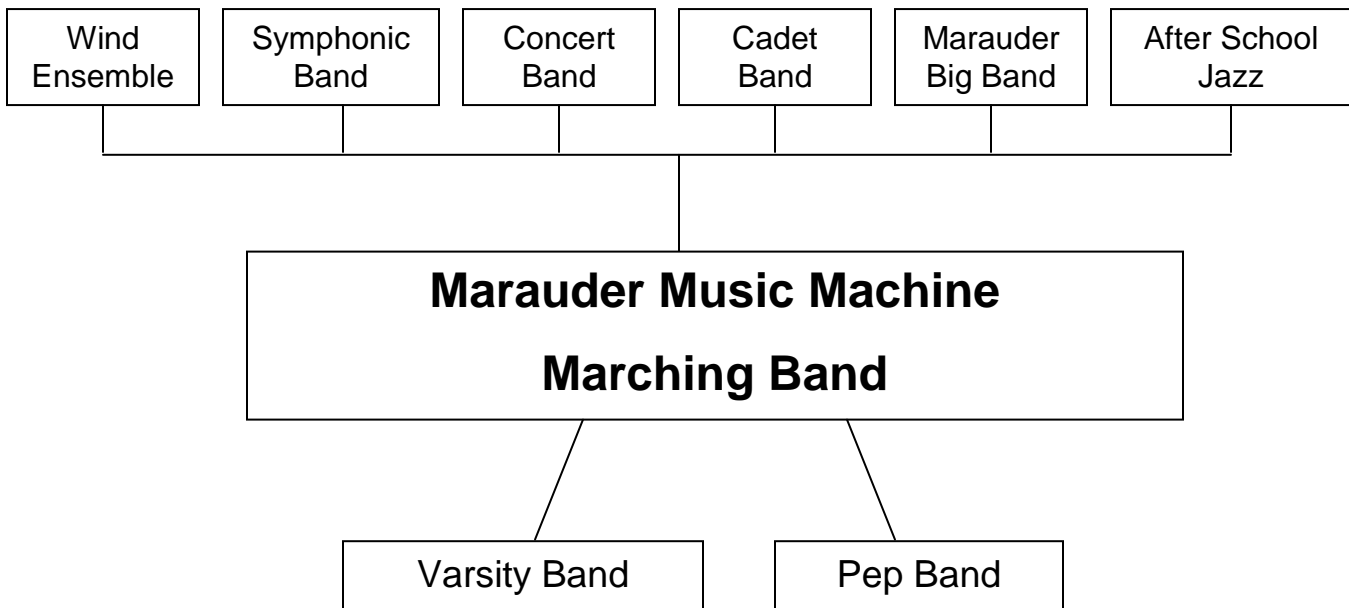
## INFORMATION

We have two systems on the internet to help keep you informed. Our main website address is [www.warrenmottbandclub.com](http://www.warrenmottbandclub.com). Surf over there to keep current. We have a Yahoo! site that is used to get information out to members quickly. Positive posting is allowed as well as information requests, this group is a great source of information and communication it is highly recommended for all band club members! Email Rich Byrnes [rbyrnesjr@comcast.net](mailto:rbyrnesjr@comcast.net) to be invited and then accept the invitation that is sent to you via this Yahoo! Site.

We look forward to having each and every one of you as a Music Machine Marauder and a Warren Mott Band Parent. Never hesitate to ask a question or to volunteer. The Warren Mott Band Club needs parents to volunteer. We can't do this without you!

The Warren Mott Band Club meets the first Monday of every month, excluding July, August and January, at 7:30pm in the Band Room. Please join us and volunteer. You will totally enjoy yourself. Your child will appreciate you being there – whether they admit it or not.

We hope this booklet answers many of your questions. If there is anything that we did not address please contact Becky Hercula 586.574-3047 or [bmomrn@wowway.com](mailto:bmomrn@wowway.com) or Sue Trombley 586.978.1644 [ssmpb5@wowway.com](mailto:ssmpb5@wowway.com)



---

I have read the content of this Band Camp Handbook and agree to follow all rules and requirements.

Student Name\_\_\_\_\_

Student Signature\_\_\_\_\_

I have read the content of the Band Camp Handbook and have discussed the expectations with my WMHS Band Student.

Parent/Guardian Name\_\_\_\_\_

Parent/ Guardian Signature\_\_\_\_\_

**Please read, sign and return the bottom portion of the page,  
with your band camp registration.**